

OSM/LUM DECISION SHEET (DSH)

Standard(s) (incl. year)	Subclause(s):	Tracking No.	Year
EN 60598-1:2015/A1:2018	4.11.3 - 7	DSH 0856A	2019
Category:			
LITE			
Subject:	Key words:	Developed by	Approved at
Crimped connections	<ul style="list-style-type: none"> - Relevant tests - Crimped connections - Mechanical/electrical contacts 	OSM/LUM-ETF5	2019 ETICS Plenary Meeting

Question

On a luminaire the reflector is made of two parts of aluminium. These parts are jointed together in three points by a crimped connection. These connections ensure a mechanical and electrical contacts. Is this construction acceptable?

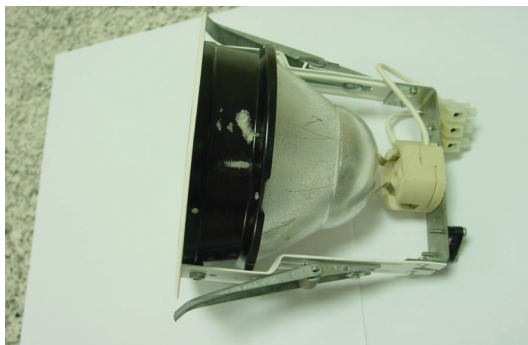


Photo 1



Photo 2

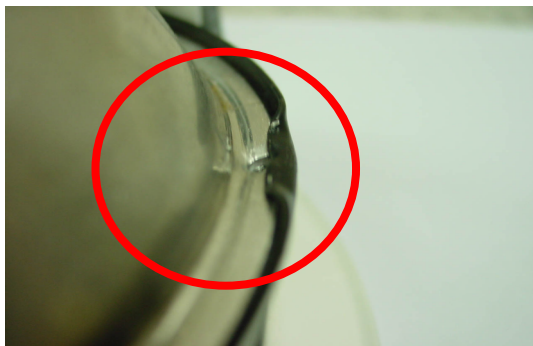


Photo 3

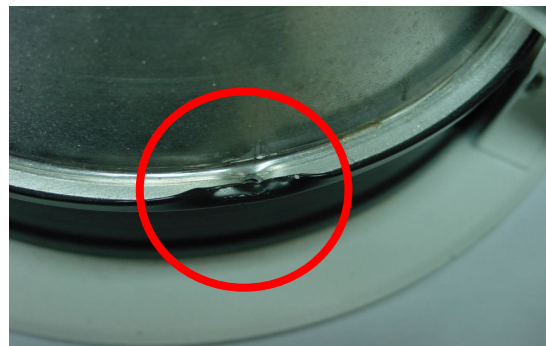


Photo 4

Decision

The principle is acceptable. All the relevant tests need to be fulfilled.

Explanatory notes
